



THE BERNIE SCHOLARSHIP
AWARDS PROGRAM

Performance Assessment Findings
May 2016

Background

The Bernie Scholarship Awards program engaged an expert consulting firm to survey those who have received scholarships during the past 21 years, and based on their responses, and a review of other records, to assess: (1) “How much” did we do; (2) “How well” did we do it; and (3) Are our scholars “better off” as result?

Here are the survey results as of May 2016 based primarily on the survey responses received (16% of the 270 scholars who received 384 awards).

DEMOGRAPHIC PROFILE OF BERNIE SCHOLARS

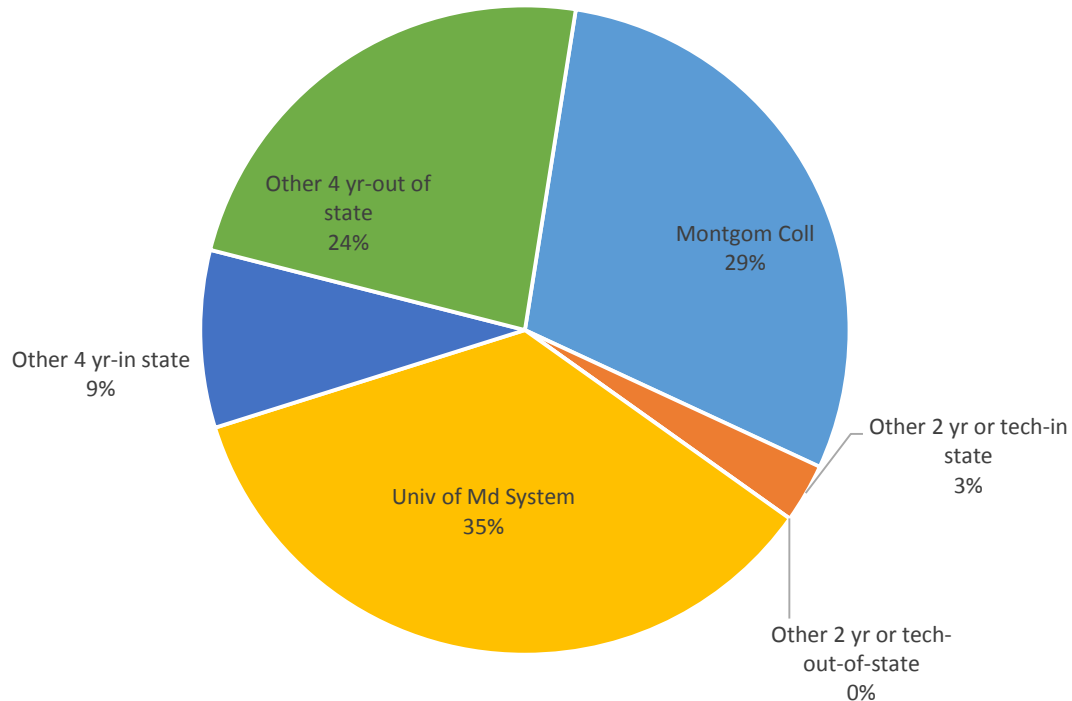
1. **Gender:** 65% Female; 35% Male
2. **Age:** Ave: 27, Median: 21
3. **Race:** 93% of respondents were minorities with 70% identifying themselves as “Black/African-American.”
4. **Household Income (Applicants):** Ave: \$25,226, Median: \$24,000
5. **Financial Need:**
 - 96% agreed or strongly agreed that the Bernie award was important in their ability to enroll in school
 - 91% agreed or strongly agreed that other funding was important in their ability to enroll in school
6. **Program Participation Starting Point:**
 - 1/3 high school seniors
 - 1/3 already enrolled in two-year institution
 - 1/3 already enrolled in four-year institution
7. **GPA of Applicants:** Median of 3.1
8. **College Credits Already Earned Upon Application:**
 - No credits: 39%
 - 1-24 credits: 32%
 - 25 or more credits: 28%
9. **Standardized Test Outcomes:** Compared to results for students taking standardized tests across the country, the results for Bernie Scholars applicants compare favorably:
 - The mean composite ACT score for Bernie Scholars Applicants of 20 lagged only slightly behind the comparable score (21) for all high school graduates taking the ACT in 2015.
 - The mean SAT score for Bernie Scholars of 1466 lagged only slightly behind the mean SAT scores for college-bound seniors of 1490 in 2015
10. **Initial Educational Goal:** Master’s (9%); Bachelor’s (56%), Associate’s (28%), Non-credit Certificate (2%), Not answered (5%)

How Much?

Metrics:

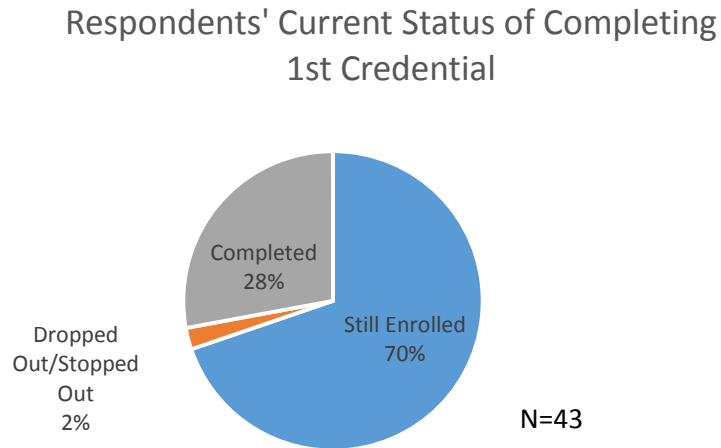
- A. Total Funding Awarded to Date (May 2016): \$430,700
- B. Total Number of Awards to Date (May 2016): 384
- C. Awardees Choice of College: 68% of respondents reported attempting credits at 4 Yr institutions, about half of them at a Univ. System institution. Among the 32% of respondents at 2 Yr institutions, nearly all were at Montgomery College

Where Were Credits Attempted?

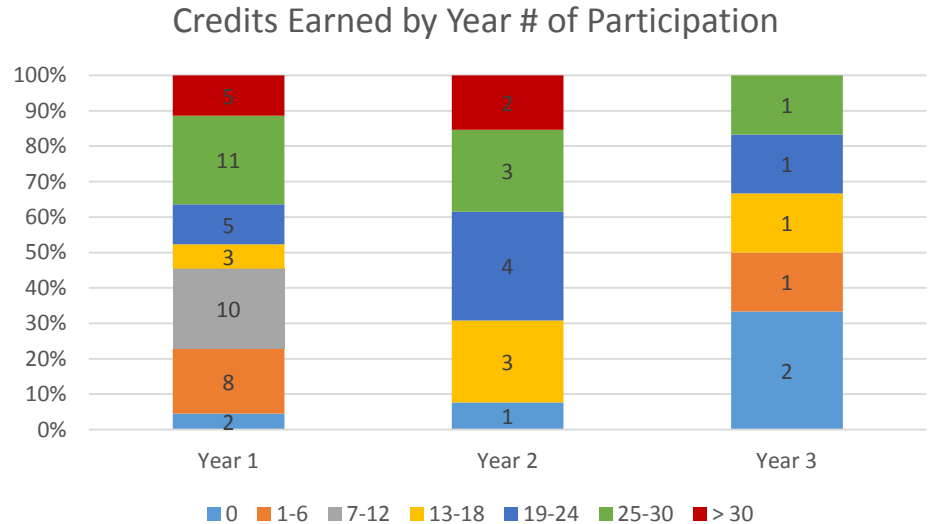


How Well?

A. Completion Status: 98% respondents graduated or are still enrolled.

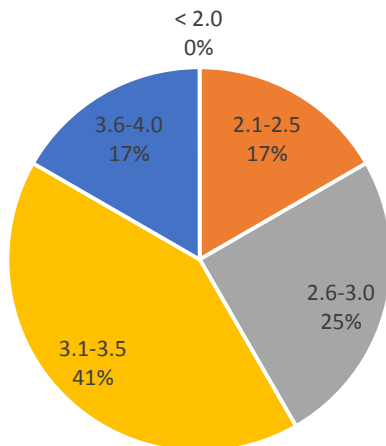


B. Credits Completed: By the end of year 1 of participation, nearly 50% of respondents had successfully completed 19 or more credits.



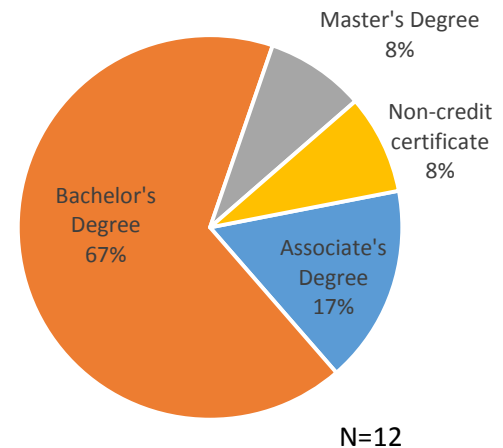
C. GPAs of Those Still Enrolled: 58% of respondents who are still enrolled have GPAs of 3.1 or higher.

GPAs of Those Still Enrolled



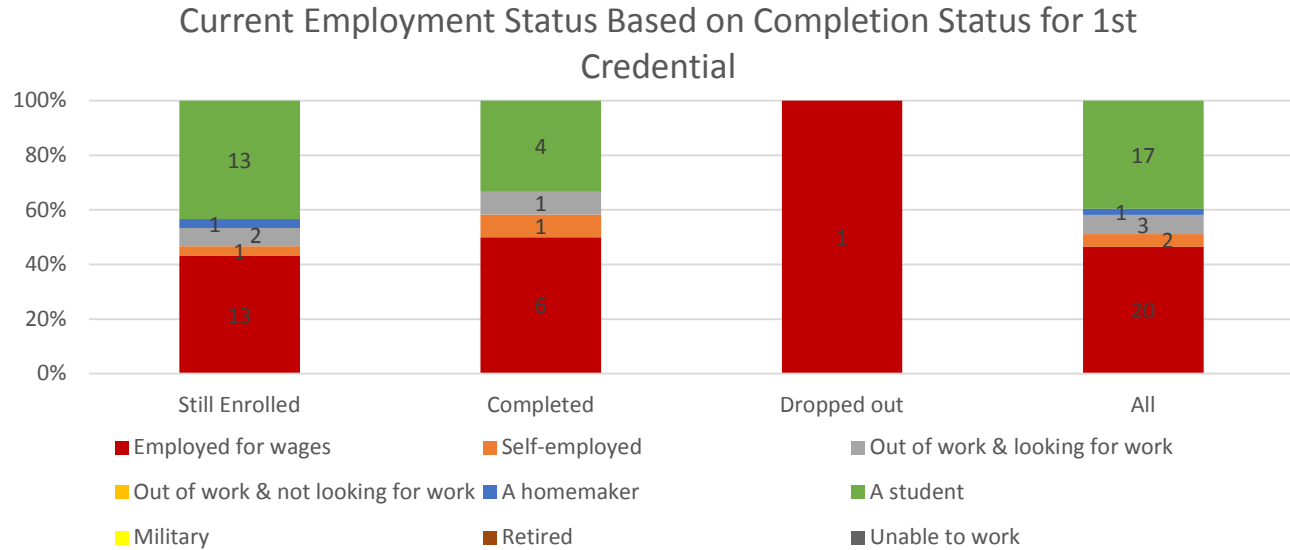
D. Type of Degree Earned: Nearly 70% of completers earned a Bachelor's degree and nearly 20% earned an Associate's degree.

Type of Degree Earned

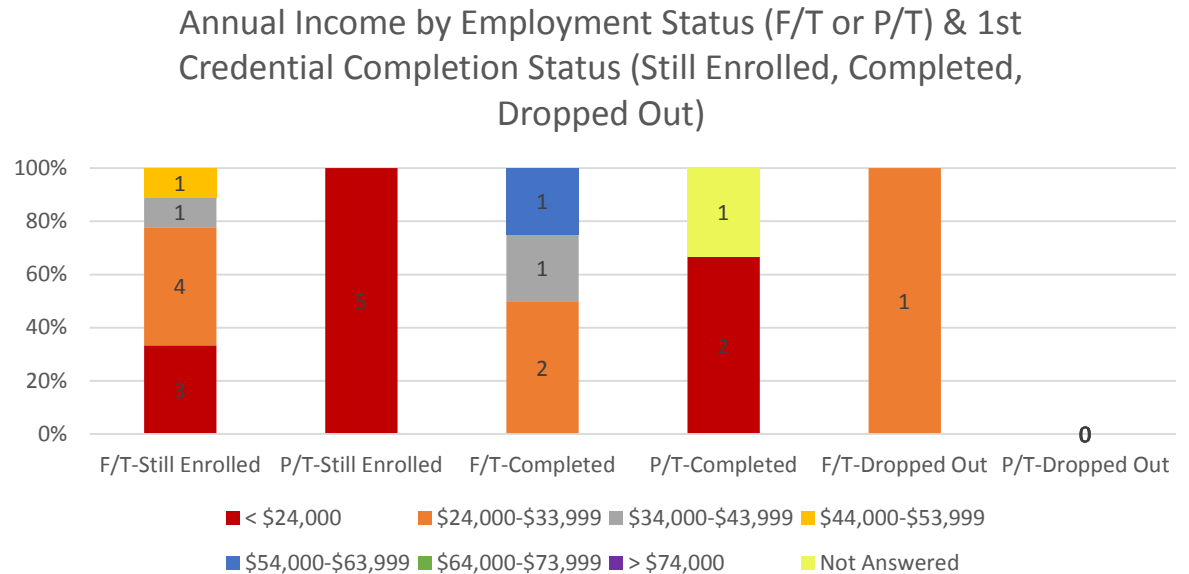


Better Off?

A. Employment Status: Roughly half of the 43 respondents reported being employed for wages, with another 40% reporting their employment status as “a student.”



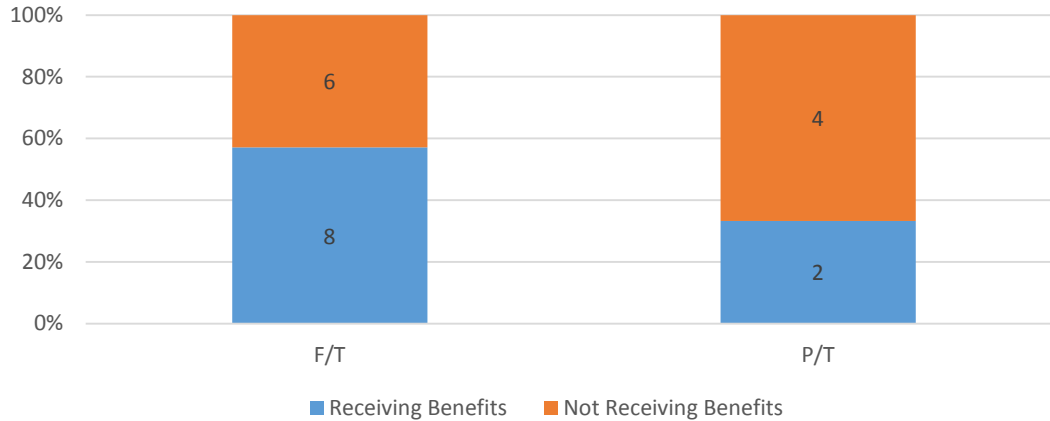
B. Annual Income: Respondents’ self-reported incomes are modest; but one explanation is that many are still in school.



Better Off?

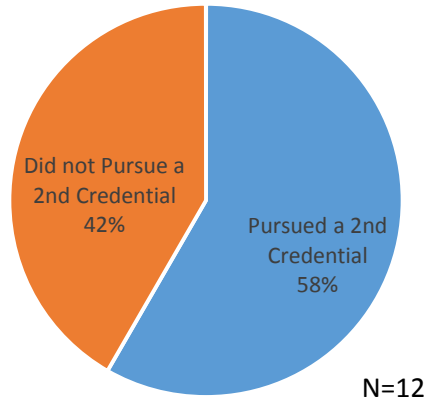
C. Employment Benefits: Roughly 60% of respondents who reported working full-time are receiving employment benefits

Among Those Employed, What Percentage are Receiving Employment Benefits (e.g., health insurance, retirement)

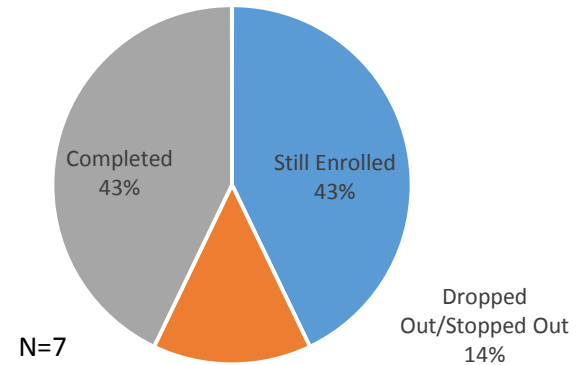


D. Pursuit of Additional Credential(s): 58% of completers pursued additional degrees or credentials. 86% of those pursuing a 2nd degree or credential either completed or are still enrolled in school.

Did Respondents Pursue Additional Credential?



Completion Status for Those Pursuing a 2nd Credential



Key Conclusions

The fact that 98% of respondents either completed or are still enrolled is significant, given that:

- At 4 yr public institutions in Md. the retention rate for African-Americans is 80% and the 6-yr graduation rate is 44%
- At 2 yr public institutions in Md., the 4 yr graduation and transfer rate is 34% (Source: Md. Higher Education Commission)

As most of the survey respondents were still enrolled in school, more definitive information about post-education outcomes has yet to emerge.