



THE BERNIE SCHOLARSHIP
AWARDS PROGRAM

*Performance Assessment Findings
of the Effectiveness Study
2017*

January 2018

Background

- The Bernie Scholarship Awards Program engaged an expert consulting firm again in 2017 to survey those who have received scholarships from it during the past 22 years to assess : (1) “How much” did we do; (2) “How well” did we do it; and (3) Is anyone “better off” as result. During its 22 years, it has made 461 awards to over 300 Scholars totaling over one-half million dollars.
- Here in summary form are key results of our second, and most recent, survey of our Scholars and this assessment. The full assessment report also is available.

CUMULATIVE DEMOGRAPHIC PROFILE OF 59 SURVEY RESPONDENTS

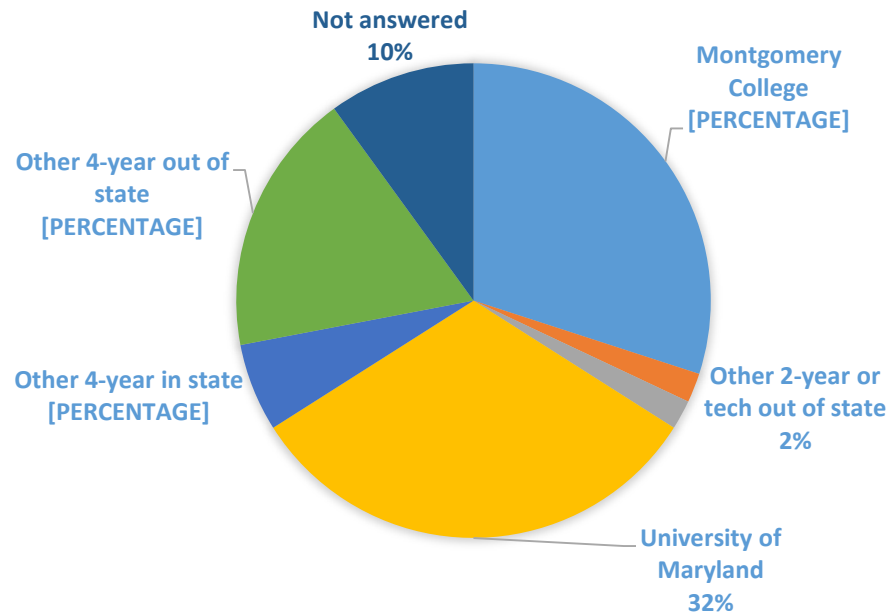
- 1. Gender:** 70% Female; 30% Male
- 2. Age When Survey Initially Taken:** Over half of respondents were between 18 and 24 years of age
- 3. Race:** 90% of respondents were minorities with 66% identified themselves as “Black/African-American, and 14% identified as “Hispanic/Latino”
 - 87% agreed or strongly agreed that The Bernie award was important in their ability to enroll in school; 9% of respondents failed to answer this question.
 - 81% agreed or strongly agreed that other funding was important in their ability to enroll in school; 10% of respondents failed to answer this question.
- 4. College Credits Already Earned Upon Application:**
 - No credits: 35%
 - 1-24 credits: 31%
 - 25 or more credits: 23%
 - Not answered: 11%
- 5. Initial Educational Goal Upon Application:** Bachelor’s (49%), Associate’s (22%), Master’s (7%); Non-credit Certificate (2%), Not answered (13%)

How Much?

Metrics:

- A. Total Funding Awarded to Date: \$536,200
- B. Total Number of Awards to Date: 461
- C. Awardees' Choice of College: 56% of respondents reported attempting credits at 4-year institutions, over half of them at a Maryland University System institution. Among the 34% of respondents at 2-year institutions, nearly all attended Montgomery College.

WHERE WERE CREDITS ATTEMPTED?

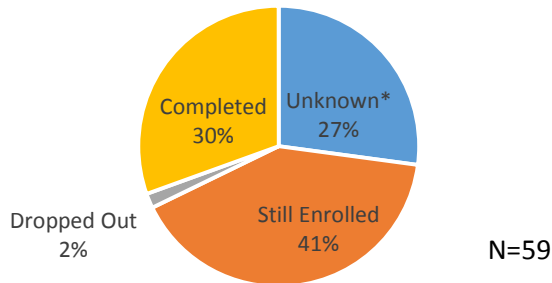


N=59

How Well?

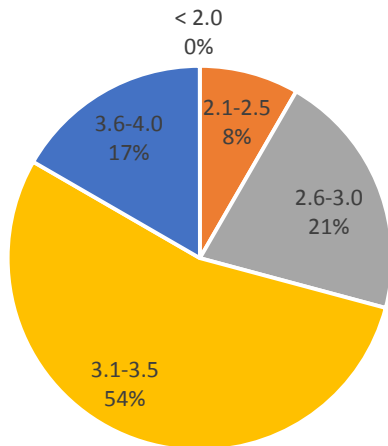
A. Completion Status: 71% of respondents graduated or are still enrolled; the status of 27% of respondents (16 people) is unknown because they reported that they were still enrolled in 2016 but did not complete the survey to update their status in 2017.

Respondents' Current Status of Completing 1st Credential



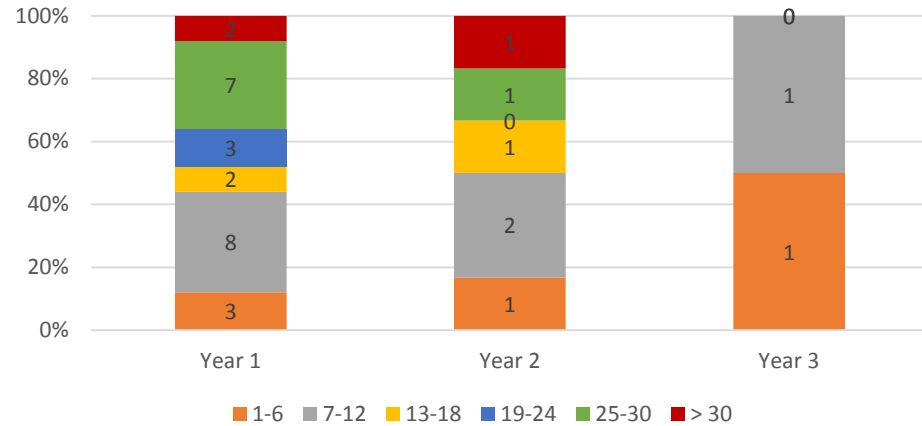
C. GPAs of Those Still Enrolled: 71% of respondents who answered this question have a GPA of 3.1 or higher. This result is 13 percentage points higher than the results for 2016.

GPAs of Those Still Enrolled



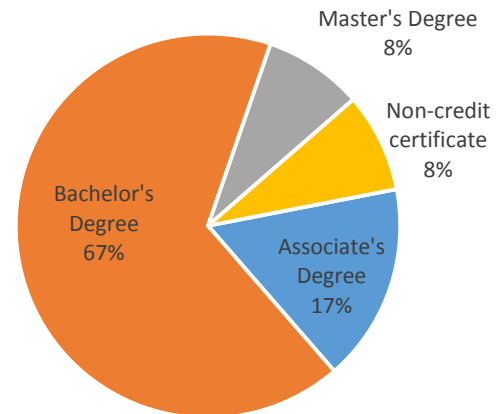
B. Credits Completed: By the end of year 1 of participation, nearly 22% of 54 respondents who answered this question had successfully completed 19 or more credits. This result is 28 percentage points lower than results for 2016.

Credits Earned by Year # of Participation



D. Type of Degree Earned: Among respondents answering this question, 67% completed a Bachelor's Degree, a result that is 2 percentage points higher than results for 2016. 17% completed an Associate's Degree, a result that is 3 percentage points higher than results in 2016.

Type of Degree Earned

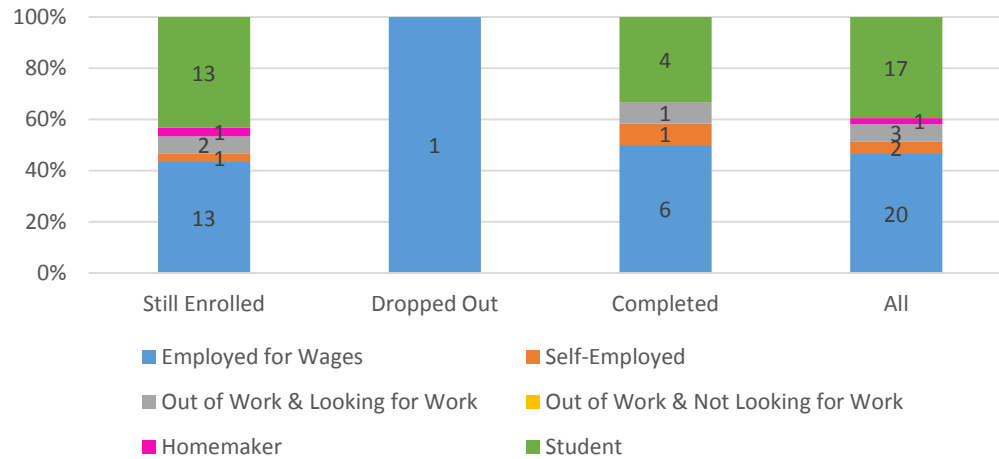


N=12

Better Off?

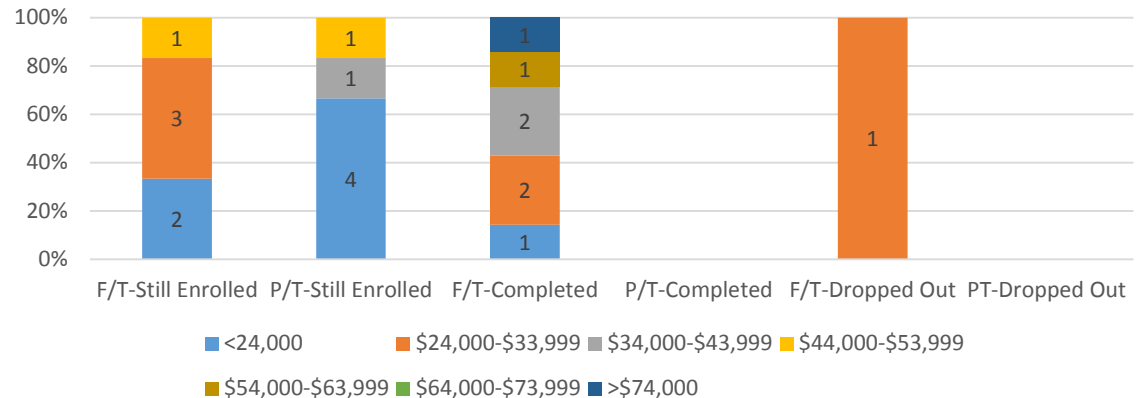
A. Employment Status: Roughly half of the 43 respondents who answered this question reported being employed for wages, with another 40% reporting their employment status as “a student.” These results are comparable with those for 2016.

Employment Outcomes Based on First Degree Completion Status



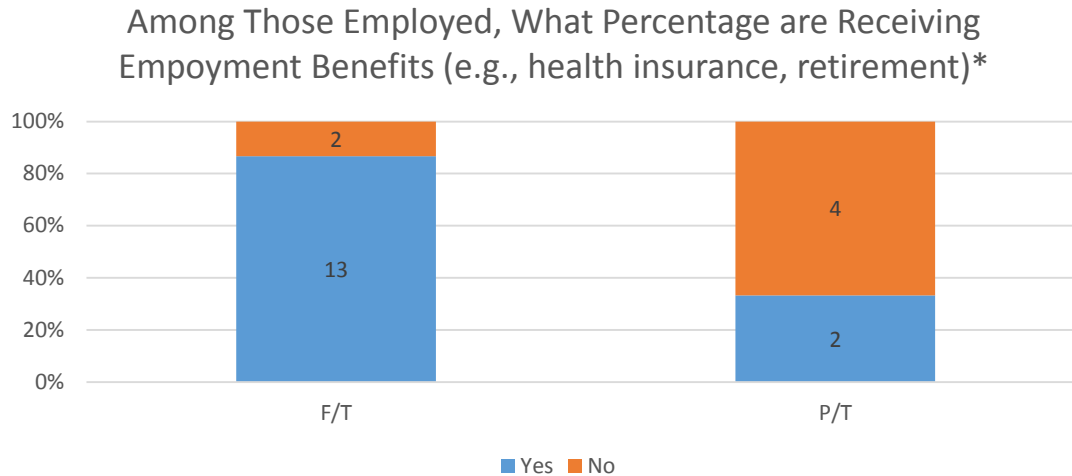
B. Annual Income: Respondents’ self-reported incomes are modest; one explanation is that many are still in school.

Wages by Employment Status (Full-time, Part-time) & Education Completion Status (Completed, Dropped Out, Still Enrolled)*



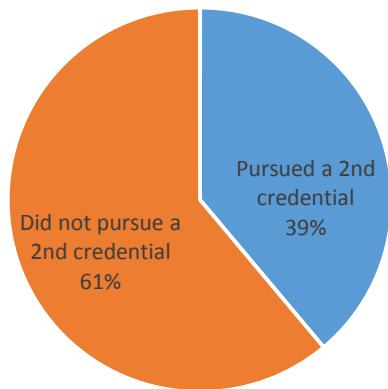
Better Off?

C. Employment Benefits: Over 80% of respondents who reported working full-time are receiving employment benefits. This result represents a substantial improvement over results for 2016.



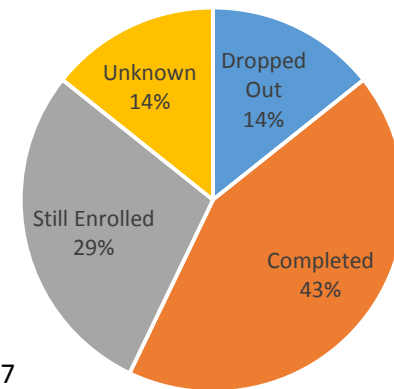
D. Pursuit of Additional Credential(s): 39% of completers pursued additional degrees or credentials. 72% of those pursuing a 2nd degree or credential either completed or are still enrolled in school. Both of these results represent slight reductions as compared to 2016 results.

Did Completers Pursue an Additional Credential?



N=18

Status of Completing Second Credential



N=7